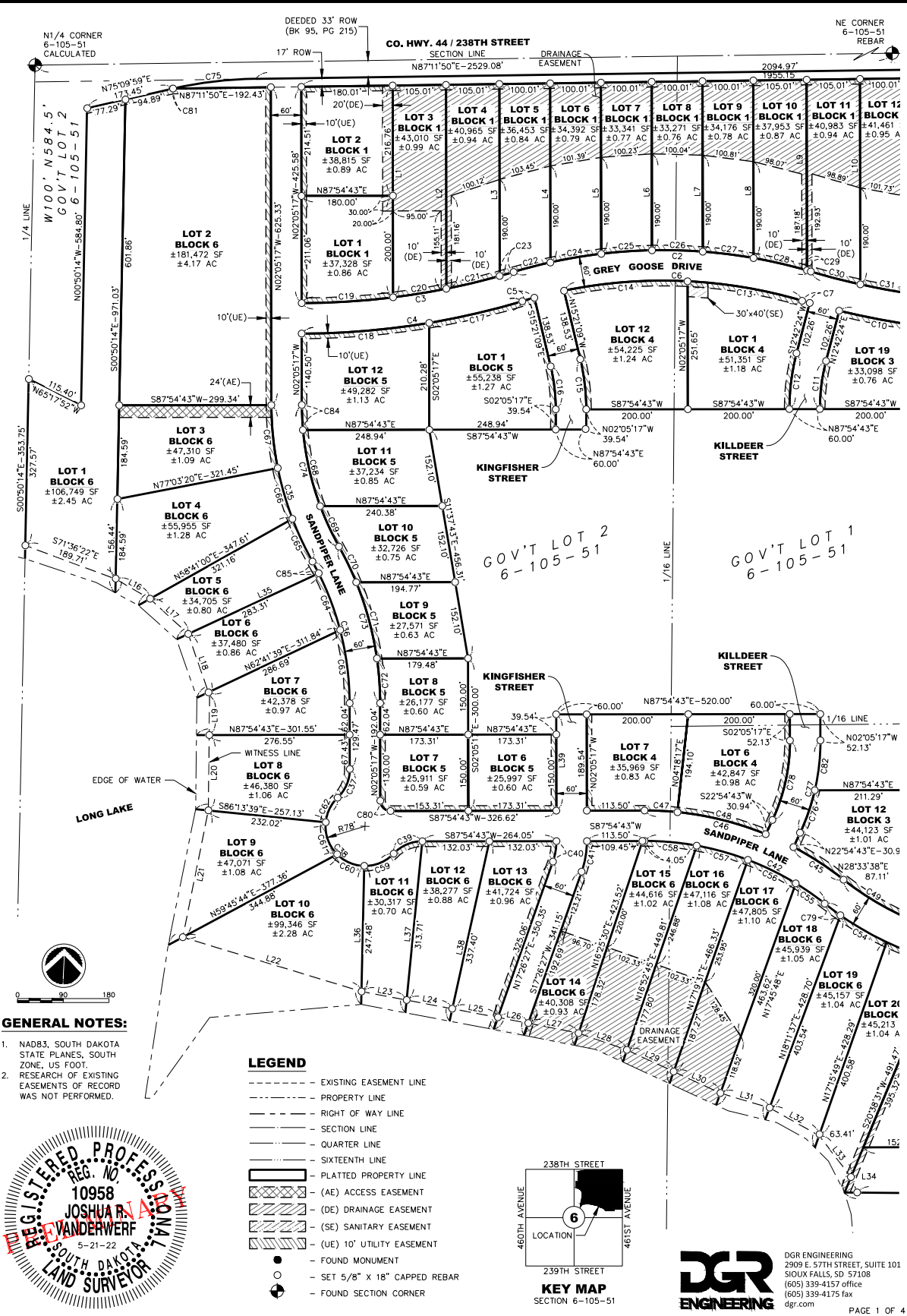


PLAT OF LOTS 1-18 IN BLOCK 1; LOTS 1, 2, AND 12 IN BLOCK 2; LOTS 1, 11, 12, AND 19 IN BLOCK 3;
 LOTS 1, 6, 7, AND 12 IN BLOCK 4; LOTS 1, AND 6- 12 IN BLOCK 5; AND LOTS 1-25 IN BLOCK 6

SMITH'S COVE ADDITION

IN THE NE1/4 OF SECTION 6, TOWNSHIP 105 NORTH, RANGE 51 WEST,
 OF THE 5TH P.M., LAKE COUNTY, SOUTH DAKOTA
 CONTAINING ±109.78 ACRES (INCLUDING ±13.04 ACRES ROW)

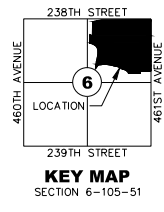


GENERAL NOTES:

- NAD83, SOUTH DAKOTA STATE PLANES, SOUTH ZONE, US FOOT.
- RESEARCH OF EXISTING EASEMENTS OF RECORD WAS NOT PERFORMED.

LEGEND

- EXISTING EASEMENT LINE
- PROPERTY LINE
- RIGHT OF WAY LINE
- SECTION LINE
- QUARTER LINE
- SIXTEENTH LINE
- PLATTED PROPERTY LINE
- (AE) ACCESS EASEMENT
- (DE) DRAINAGE EASEMENT
- (SE) SANITARY EASEMENT
- (UE) 10' UTILITY EASEMENT
- FOUND MONUMENT
- SET 5/8" X 18" CAPPED REBAR
- ⊕ FOUND SECTION CORNER

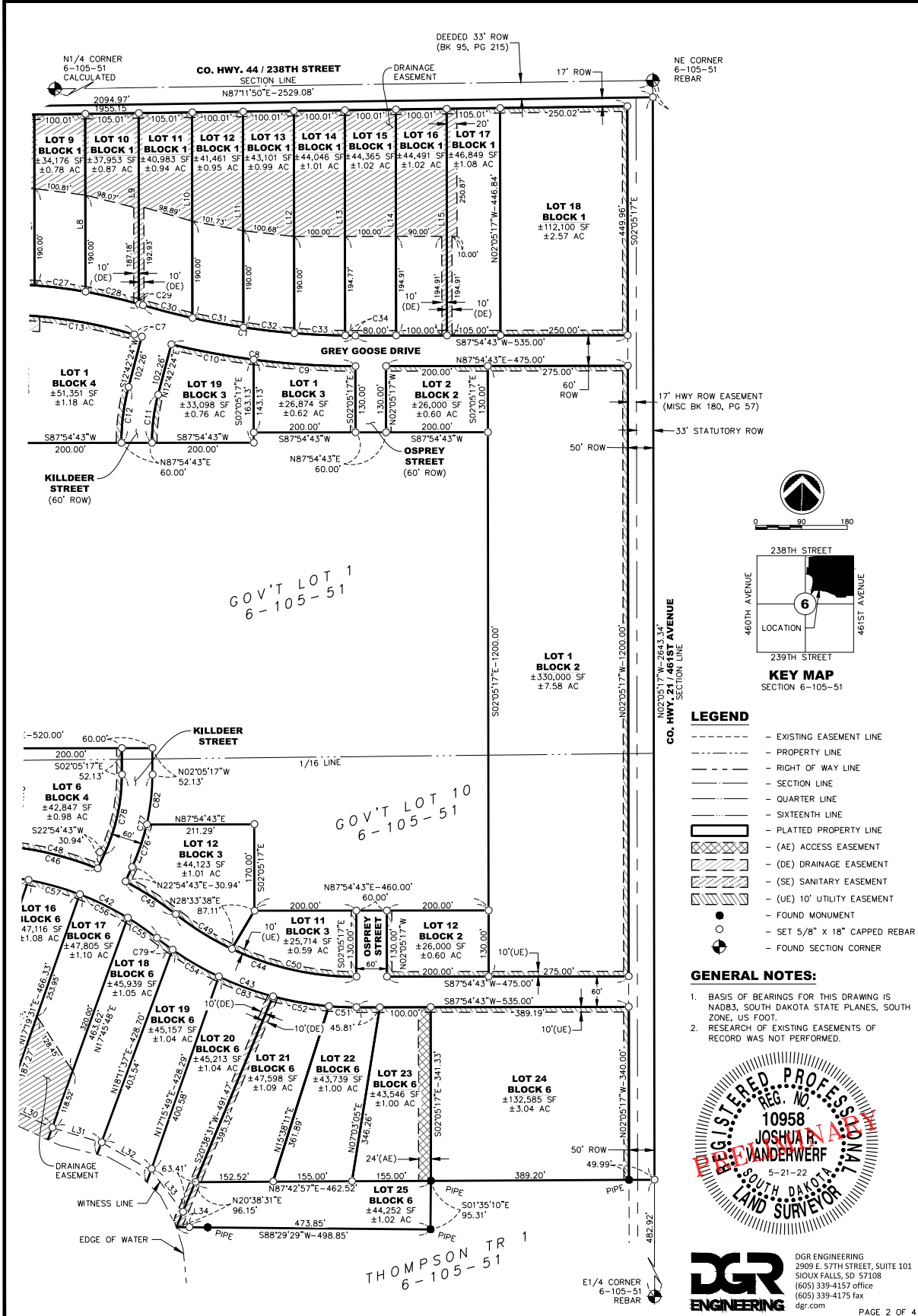


DGR ENGINEERING
 DGR ENGINEERING
 2909 E. 57TH STREET, SUITE 101
 SIOUX FALLS, SD 57108
 (605) 339-4157 office
 (605) 339-4175 fax
 dgr.com

PLAT OF LOTS 1-18 IN BLOCK 1; LOTS 1, 2, AND 12 IN BLOCK 2; LOTS 1, 11, 12, AND 19 IN BLOCK 3;
 LOTS 1, 6, 7, AND 12 IN BLOCK 4; LOTS 1, AND 6- 12 IN BLOCK 5; AND LOTS 1-25 IN BLOCK 6

SMITH'S COVE ADDITION

IN THE NE1/4 OF SECTION 6, TOWNSHIP 105 NORTH, RANGE 51 WEST,
 OF THE 5TH P.M., LAKE COUNTY, SOUTH DAKOTA
 CONTAINING ±109.78 ACRES (INCLUDING ±13.04 ACRES ROW)



PLAT OF LOTS 1-18 IN BLOCK 1; LOTS 1, 2, AND 12 IN BLOCK 2; LOTS 1, 11, 12, AND 19 IN BLOCK 3;
 LOTS 1, 6, 7, AND 12 IN BLOCK 4; LOTS 1, AND 6- 12 IN BLOCK 5; AND LOTS 1-25 IN BLOCK 6

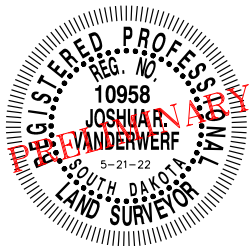
SMITH'S COVE ADDITION

IN THE NE1/4 OF SECTION 6, TOWNSHIP 105 NORTH, RANGE 51 WEST,
 OF THE 5TH P.M., LAKE COUNTY, SOUTH DAKOTA
 CONTAINING ±109.78 ACRES (INCLUDING ±13.04 ACRES ROW)

Curve Table				
Curve #	Radius	Length	Chord	Direction
C1	1470.00	423.31	421.85	N83°50'19"W
C2	1030.00	593.20	585.04	S87°54'43"W
C3	1470.00	423.31	421.85	S79°39'44"W
C4	1530.00	440.58	439.06	N79°39'44"E
C5	970.00	24.76	24.76	N72°08'38"E
C6	970.00	473.88	469.18	S89°35'05"E
C7	1530.00	15.50	15.50	S75°52'46"E
C8	1530.00	365.08	364.21	S85°15'09"E
C9	1530.00	200.57	200.43	S88°19'57"E
C10	1530.00	164.50	164.42	N81°29'49"W
C11	370.00	99.54	95.28	N05°18'33"E
C12	430.00	111.03	110.73	S05°18'33"W
C13	970.00	229.30	228.77	S82°21'41"E
C14	970.00	244.58	243.93	N83°38'35"E
C15	430.00	99.55	99.33	N08°43'13"W
C16	370.00	85.66	85.47	S08°43'13"E
C17	1530.00	188.39	188.27	N74°56'24"E
C18	1530.00	252.20	251.91	N83°11'23"E
C19	1470.00	180.45	180.34	N84°23'42"E
C20	1470.00	106.36	106.34	S78°48'20"W
C21	1470.00	107.91	107.89	S74°37'47"W
C22	1030.00	74.89	74.88	S73°29'45"W
C23	1470.00	28.58	28.58	S71°58'11"W
C24	1030.00	101.43	101.39	S78°24'00"W
C25	1030.00	100.27	100.23	S84°00'37"W
C26	1030.00	100.08	100.04	S89°34'58"W
C27	1030.00	100.85	100.81	N84°49'43"W
C28	1030.00	107.84	107.79	N79°01'27"W
C29	1030.00	7.83	7.83	N75°48'25"W
C30	1470.00	100.72	100.70	N77°33'07"W
C31	1470.00	101.75	101.73	N81°29'53"W
C32	1470.00	100.70	100.68	N85°26'36"W
C33	1470.00	100.13	100.11	N89°21'26"W
C34	1470.00	20.00	20.00	S88°18'06"W
C35	630.00	322.02	318.53	N16°43'53"W
C36	570.00	291.35	288.19	N16°43'53"W
C37	78.00	62.88	61.19	N21°00'19"E
C38	78.00	248.28	155.97	N47°05'17"W
C39	78.00	62.88	61.19	S64°49'06"W
C40	120.00	40.90	40.70	N07°40'35"E
C41	180.00	61.35	61.06	S07°40'35"W
C42	570.00	382.70	375.55	N72°51'14"W
C43	630.00	422.98	415.08	N72°51'14"W

Curve Table				
Curve #	Radius	Length	Chord	Direction
C44	570.00	382.70	375.55	N72°51'14"W
C45	630.00	118.08	117.91	N58°59'22"W
C46	630.00	244.88	243.34	N80°57'10"W
C47	630.00	65.00	64.97	N89°07'57"W
C48	630.00	179.88	179.27	N77°59'50"W
C49	570.00	130.10	129.82	N60°09'32"W
C50	570.00	252.59	250.53	N79°23'35"W
C51	630.00	54.08	54.07	S89°37'44"E
C52	630.00	111.78	111.64	S82°05'11"E
C54	630.00	105.44	105.32	S61°54'11"E
C55	570.00	69.67	69.63	S57°07'18"E
C56	570.00	105.06	104.91	S65°54'13"E
C57	570.00	104.62	104.48	S76°26'32"E
C58	570.00	103.34	103.20	S86°53'39"E
C59	78.00	64.67	62.84	N65°28'39"E
C60	78.00	59.47	58.04	S68°55'44"E
C61	78.00	69.24	66.99	S21°39'28"E
C62	78.00	54.90	53.77	S23°56'08"W
C63	570.00	145.68	145.28	S09°24'35"E
C64	570.00	119.55	119.33	S22°44'23"E
C65	630.00	93.01	92.93	S27°08'42"E
C66	630.00	104.20	104.08	S18°10'39"E
C67	630.00	124.81	124.61	S07°45'50"E
C68	570.00	154.22	153.75	N14°46'31"W
C69	570.00	88.02	87.94	N26°57'02"W
C70	630.00	78.00	77.95	N27°49'40"W
C71	630.00	155.77	155.37	N17°11'52"W
C72	630.00	88.25	88.18	N06°06'05"W
C73	630.00	322.02	318.53	N16°43'53"W
C74	570.00	291.35	288.19	N16°43'53"W
C75	786.06	164.02	163.72	N81°14'10"E
C76	430.00	88.89	88.73	N16°59'23"E
C77	430.00	187.62	186.14	N10°24'43"E
C78	370.00	161.44	160.17	S10°24'43"W
C79	630.00	38.36	38.35	S55°21'51"E
C80	20.00	31.42	28.28	N47°05'17"W
C81	777.02	1.27	1.27	N75°12'43"E
C82	430.00	98.73	98.52	N04°29'23"E
C83	630.00	113.31	113.16	S71°51'02"E
C84	570.00	49.10	49.09	N04°33'22"W
C85	570.00	26.13	26.13	S30°03'40"E

Line Table		
Line #	Length	Direction
L1	416.76	N2° 05' 17"W
L2	401.18	N2° 05' 17"W
L3	377.76	N2° 05' 17"W
L4	352.52	N2° 05' 17"W
L5	337.01	N2° 05' 17"W
L6	331.44	N2° 05' 17"W
L7	335.60	N2° 05' 17"W
L8	349.59	N2° 05' 17"W
L9	375.26	N2° 05' 17"W
L10	404.04	N2° 05' 17"W
L11	423.99	N2° 05' 17"W
L12	436.88	N2° 05' 17"W
L13	442.90	N2° 05' 17"W
L14	444.28	N2° 05' 17"W
L15	445.53	N2° 05' 17"W
L16	78.01	S62° 02' 22"E
L17	102.05	S49° 24' 22"E
L18	128.69	S21° 09' 52"E
L19	77.32	S1° 22' 12"E
L20	148.47	S1° 22' 12"E
L21	254.53	S9° 25' 54"W
L22	368.51	S75° 07' 55"E
L23	89.67	S81° 16' 38"E
L24	91.46	S81° 16' 38"E
L25	91.53	S81° 16' 38"E
L26	60.69	S81° 14' 04"E
L27	100.89	S80° 46' 01"E
L28	100.91	S72° 50' 49"E
L29	101.41	S67° 11' 48"E
L30	101.29	S67° 11' 48"E
L31	101.04	S75° 22' 54"E
L32	111.90	S62° 44' 04"E
L33	102.77	S39° 27' 13"E
L34	32.86	S24° 09' 51"E
L35	308.31	N63° 05' 51"E
L36	272.63	N0° 46' 11"W
L37	338.81	N3° 37' 41"E
L38	362.41	N10° 29' 01"E
L39	189.54	S2° 05' 17"E



PLAT OF LOTS 1-18 IN BLOCK 1; LOTS 1, 2, AND 12 IN BLOCK 2; LOTS 1, 11, 12, AND 19 IN BLOCK 3;
 LOTS 1, 6, 7, AND 12 IN BLOCK 4; LOTS 1, AND 6- 12 IN BLOCK 5; AND LOTS 1-25 IN BLOCK 6
SMITH'S COVE ADDITION
 IN THE NE1/4 OF SECTION 6, TOWNSHIP 105 NORTH, RANGE 51 WEST,
 OF THE 5TH P.M., LAKE COUNTY, SOUTH DAKOTA
 CONTAINING ±109.78 ACRES (INCLUDING ±13.04 ACRES ROW)

SURVEYOR'S CERTIFICATE

I, JOSHUA VANDERWERF, A REGISTERED LAND SURVEYOR UNDER THE LAWS OF THE STATE OF SOUTH DAKOTA DO HEREBY CERTIFY THAT ON OR BEFORE JUNE 25, 2021, I HAVE SURVEYED A PORTION OF THOMPSON TRACT 1, LOT 1, LOT 2, AND LOT 10 IN THE NE1/4 OF SECTION 6, TOWNSHIP 105 NORTH, RANGE 51 WEST, OF THE 5TH P.M., LAKE COUNTY, SOUTH DAKOTA AND PLATTED THE SAME INTO LOTS 1-18 IN BLOCK 1; LOTS 1, 2, AND 12 IN BLOCK 2; LOTS 1, 11, 12, AND 19 IN BLOCK 3; LOTS 1, 6, 7, AND 12 IN BLOCK 4; LOTS 1, AND 6- 12 IN BLOCK 5; AND LOTS 1-25 IN BLOCK 6 OF SMITH'S COVE ADDITION IN THE NE1/4 OF SECTION 6, TOWNSHIP 105 NORTH, RANGE 51 WEST, OF THE 5TH P.M., LAKE COUNTY, SOUTH DAKOTA, WITH ACRES AND DIMENSIONS AS SHOWN ON THE ABOVE PLAT.

THE SAME SHALL HEREAFTER BE KNOWN AND DESCRIBED AS LOTS 1-18 IN BLOCK 1; LOTS 1, 2, AND 12 IN BLOCK 2; LOTS 1, 11, 12, AND 19 IN BLOCK 3; LOTS 1, 6, 7, AND 12 IN BLOCK 4; LOTS 1, AND 6- 12 IN BLOCK 5; AND LOTS 1-25 IN BLOCK 6 OF SMITH'S COVE ADDITION IN THE NE1/4 OF SECTION 6, TOWNSHIP 105 NORTH, RANGE 51 WEST, OF THE 5TH P.M., LAKE COUNTY, SOUTH DAKOTA.

I FURTHER CERTIFY THAT THE ABOVE PLAT CORRECTLY REPRESENTS THE SAME TO THE BEST OF MY KNOWLEDGE AND BELIEF AND THAT THIS SURVEY WAS PERFORMED AT THE REQUEST AND UNDER THE DIRECTION OF THE OWNERS FOR THE PURPOSE OF TRANSFER.

DATED THIS 21ST DAY OF MAY, 2022.



5-21-22
 JOSHUA R. VANDERWERF LS REG. NO. 10958

OWNER'S CERTIFICATE

I, THE UNDERSIGNED, DO HEREBY CERTIFY THAT I AM THE OWNER OF ALL LAND INCLUDED IN THE ABOVE PLAT AND THAT SAID PLAT HAS BEEN MADE AT MY REQUEST AND IN ACCORDANCE WITH OUR INSTRUCTIONS FOR THE PURPOSES (INDICATED HEREIN), AND THAT THE DEVELOPMENT OF THIS LAND SHALL CONFORM TO ALL EXISTING APPLICABLE ZONING, SUBDIVISION AND EROSION AND SEDIMENT CONTROL REGULATIONS.

I HEREBY DEDICATE TO THE PUBLIC FOR PUBLIC USE FOREVER THE STREETS, ROADS AND ALLEYS, PARKS AND PUBLIC GROUNDS, IF ANY, AS SHOWN ON SAID PLAT, INCLUDING ALL SEWERS, CULVERTS, BRIDGES, WATER DISTRIBUTION LINES, SIDEWALKS AND OTHER IMPROVEMENTS ON OR UNDER THE STREETS, ALLEYS, PARKS AND PUBLIC GROUNDS WHETHER SUCH IMPROVEMENTS ARE SHOWN OR NOT. I ALSO HEREBY GRANT EASEMENTS TO RUN WITH THE LAND FOR WATER, DRAINAGE, SEWER, GAS, ELECTRIC, TELEPHONE OR OTHER PUBLIC UTILITY LINES OR SERVICES UNDER, ON OR OVER THOSE STRIPS OF LAND DESIGNATED HEREON AS EASEMENTS

DATED THIS _____ DAY OF _____, 2022

 <OWNER>, <TITLE>
 SMITH'S COVE, LLC
 A SOUTH DAKOTA LIMITED LIABILITY COMPANY

STATE OF _____)
)SS
 COUNTY OF _____)

ON THIS _____ DAY OF _____, 2022, BEFORE ME, APPEARED <OWNER>, <TITLE>, SMITH'S COVE, LLC, A SOUTH DAKOTA LIMITED LIABILITY COMPANY AND THAT THEY, AS SAID TRUSTEES AND BEING AUTHORIZED TO DO SO, EXECUTED THE FOREGOING INSTRUMENTS FOR THE PURPOSE THEREIN CONTAINED.

IN WITNESS THEREOF, I HAVE HEREUNTO SET MY HAND AND OFFICIAL SEAL THIS _____ DAY OF _____, 2022.

 MY COMMISSION EXPIRES:
 NOTARY PUBLIC, LAKE COUNTY, _____

COUNTY PLANNING COMMISSIONERS

IT WAS MOVED BY _____ AND SECONDED BY _____ AND MOTION CARRIED, THAT THE PLAT SHOWN HEREON AND DESCRIBED AS LOTS 1-18 IN BLOCK 1; LOTS 1, 2, AND 12 IN BLOCK 2; LOTS 1, 11, 12, AND 19 IN BLOCK 3; LOTS 1, 6, 7, AND 12 IN BLOCK 4; LOTS 1, AND 6- 12 IN BLOCK 5; AND LOTS 1-25 IN BLOCK 6 OF SMITH'S COVE ADDITION IN THE NE1/4 OF SECTION 6, TOWNSHIP 105 NORTH, RANGE 51 WEST, OF THE 5TH P.M., LAKE COUNTY, SOUTH DAKOTA BE RECOMMENDED FOR APPROVED BY THE COUNTY PLANNING COMMISSIONERS

AT ITS MEETING HELD ON _____ DAY OF _____, 2022.

 CHAIRPERSON, COUNTY PLANNING COMMISSION
 LAKE COUNTY, SOUTH DAKOTA

COUNTY COMMISSIONERS

IT WAS MOVED BY _____ AND SECONDED BY _____ AND MOTION CARRIED, THAT THE PLAT SHOWN HEREON AND DESCRIBED AS LOTS 1-18 IN BLOCK 1; LOTS 1, 2, AND 12 IN BLOCK 2; LOTS 1, 11, 12, AND 19 IN BLOCK 3; LOTS 1, 6, 7, AND 12 IN BLOCK 4; LOTS 1, AND 6- 12 IN BLOCK 5; AND LOTS 1-25 IN BLOCK 6 OF SMITH'S COVE ADDITION IN THE NE1/4 OF SECTION 6, TOWNSHIP 105 NORTH, RANGE 51 WEST, OF THE 5TH P.M., LAKE COUNTY, SOUTH DAKOTA, BE APPROVED AND ACCEPTED BY THE BOARD OF COUNTY COMMISSIONERS

AT ITS MEETING HELD ON THE _____ DAY OF _____, 2022 AND THE COUNTY AUDITOR IS HEREBY INSTRUCTED TO ENDORSE ON SUCH PLAT A COPY OF THIS RESOLUTION AND TO CERTIFY THE SAME.

 CHAIRPERSON, COUNTY COMMISSION
 LAKE COUNTY, SOUTH DAKOTA

COUNTY AUDITOR

I, _____ LAKE COUNTY AUDITOR, HEREBY CERTIFY THAT I HAVE RECEIVED A COPY OF THE ABOVE PLAT OF LOTS 1-18 IN BLOCK 1; LOTS 1, 2, AND 12 IN BLOCK 2; LOTS 1, 11, 12, AND 19 IN BLOCK 3; LOTS 1, 6, 7, AND 12 IN BLOCK 4; LOTS 1, AND 6- 12 IN BLOCK 5; AND LOTS 1-25 IN BLOCK 6 OF SMITH'S COVE ADDITION IN THE NE1/4 OF SECTION 6, TOWNSHIP 105 NORTH, RANGE 51 WEST, OF THE 5TH P.M., LAKE COUNTY, SOUTH DAKOTA.

DATED THIS _____ DAY OF _____, 2022.

 AUDITOR
 LAKE COUNTY, SOUTH DAKOTA

COUNTY TREASURER'S CERTIFICATE

I, THE TREASURER OF LAKE COUNTY, SOUTH DAKOTA, DO HEREBY CERTIFY THAT ALL TAXES WHICH ARE LIENS UPON ANY LANDS IN THE ABOVE PLAT AS SHOWN BY THE RECORDS OF MY OFFICE TO BE PAID IN FULL.

SIGNED THIS _____ DAY OF _____, 2022.

 COUNTY TREASURER
 LAKE COUNTY, SOUTH DAKOTA

DIRECTOR OF EQUALIZATION

I, THE DIRECTOR OF EQUALIZATION OF LAKE COUNTY, SOUTH DAKOTA, DO HEREBY CERTIFY THAT A COPY OF THE ABOVE PLAT HAS BEEN FILED IN MY OFFICE

THIS _____ DAY OF _____, 2022.

 DIRECTOR OF EQUALIZATION
 LAKE COUNTY, SOUTH DAKOTA

REGISTER OF DEEDS

FILED FOR RECORD THIS _____ DAY OF _____, 2022, AT _____ .M.
 AND RECORDED IN BOOK _____ OF PLATS ON PAGE _____ THEREOF.

 REGISTER OF DEEDS
 LAKE COUNTY, SOUTH DAKOTA



DGR ENGINEERING
 2909 E. 57TH STREET, SUITE 101
 SIOUX FALLS, SD 57108
 (605) 339-4157 office
 (605) 339-4175 fax
 dgr.com