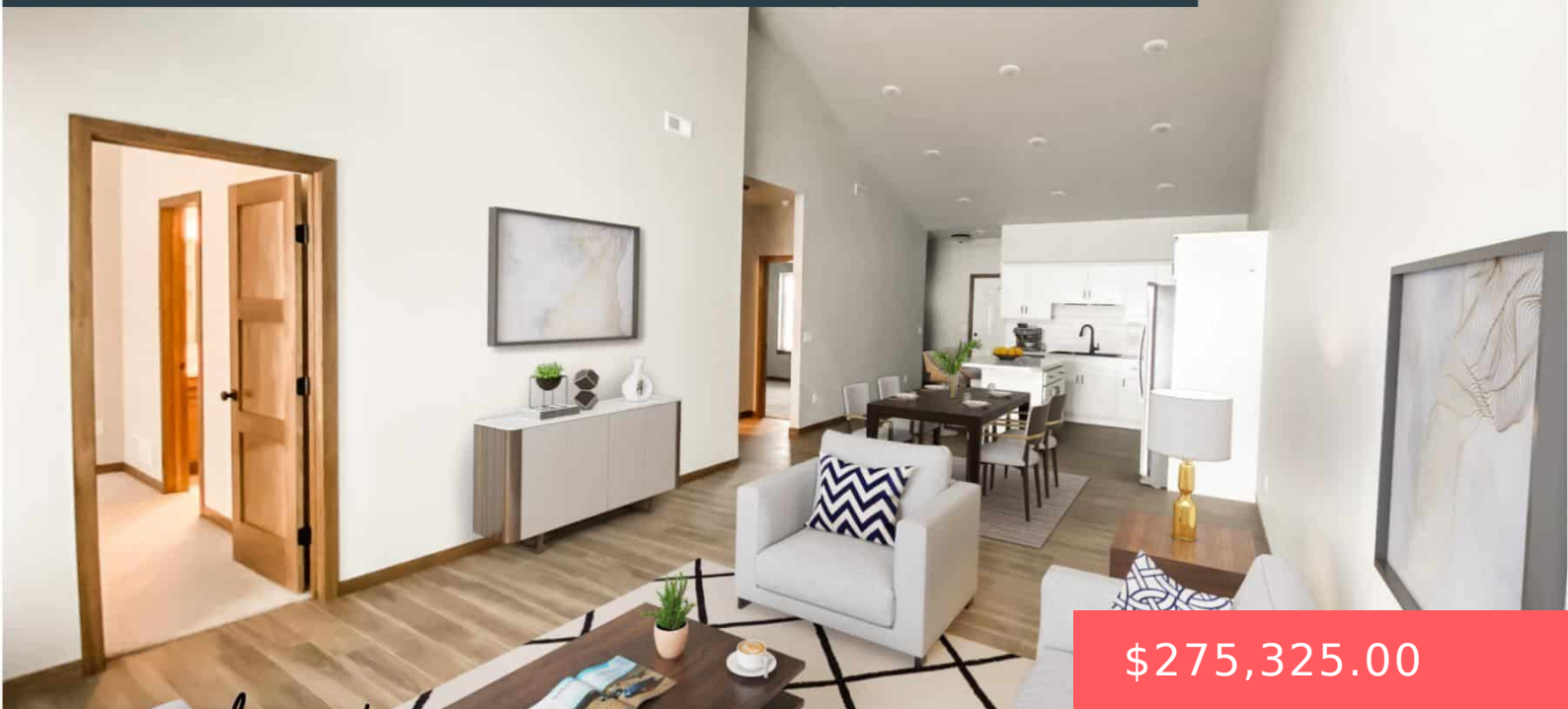


SELLER OFFERING 3% ANYTHING ALLOWANCE



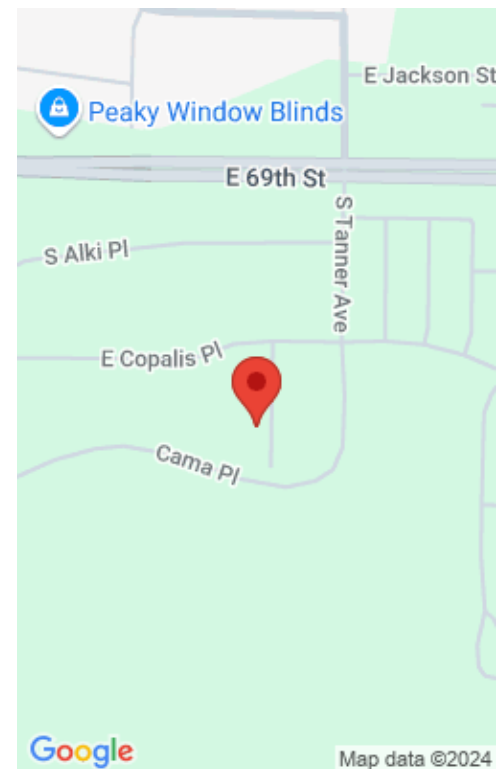
\$275,325.00

## 2524 E CAMA PL

<https://harr-lemme.com>

LOT 8 BLOCK 3 DONAHOE FARMS ADD CITY OF SIOUX FALLS

- 2 beds
- 2 baths
- Ranch, Town Home
- New Construction, RESIDENTIAL
- Active-New
- 1136 sq ft



---

## Basics

**Category:** New Construction, RESIDENTIAL

**Status:** Active-New

**Bathrooms:** 2 baths

**Area:** 1136 sq ft

**Year built:** 2024

**Type:** Ranch, Town Home

**Bedrooms:** 2 beds

**Floor level:** 1136

**Lot size:** 0 sq ft

---

## Schools

**School District:** Harrisburg

**Middle:** North MS

**Elementary:** Horizon Elementary

**High School:** Harrisburg HS

---

## Agent

**AgentEmail:** sales@empirecompanies.com

**AgentLastName:** Hyde

**AgentFirstName:** Brady

**AgentPhoneNumber:** 605-553-0163

---

## Building Details

**Floor covering:** Carpet, Laminate, Vinyl

**Exterior material:** Cement Hardboard, Part Brick

**Parking:** Attached

**Basement:** None

**Roof:** Shingle Composition

---

## Amenities & Features

**Amenities:** Garbage, Lawn Care, Snow Removal

**Features:** Main Floor Laundry, Master Bath, Master Bed Main Level



---

# Realty Office

**Office Name:** Keller Williams Realty Sioux Falls

**Office State:** SD

**Office Email:** [klrw923@kw.com](mailto:klrw923@kw.com)

**Office City:** Sioux Falls

**Office Phone:** 605-275-0555

**Office Website:** [siouxfalls.yourkwoffice.com/](http://siouxfalls.yourkwoffice.com/)

