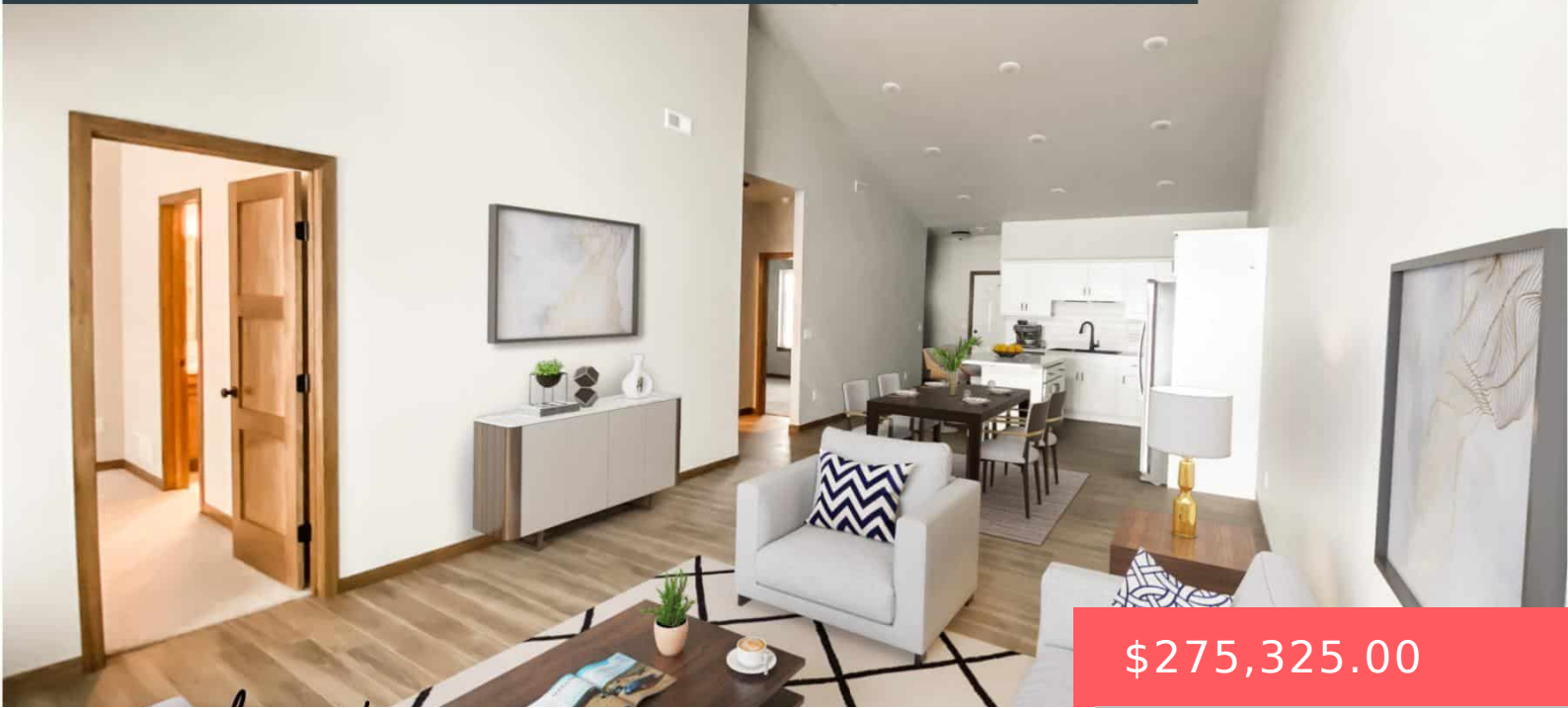


SELLER OFFERING 3% ANYTHING ALLOWANCE



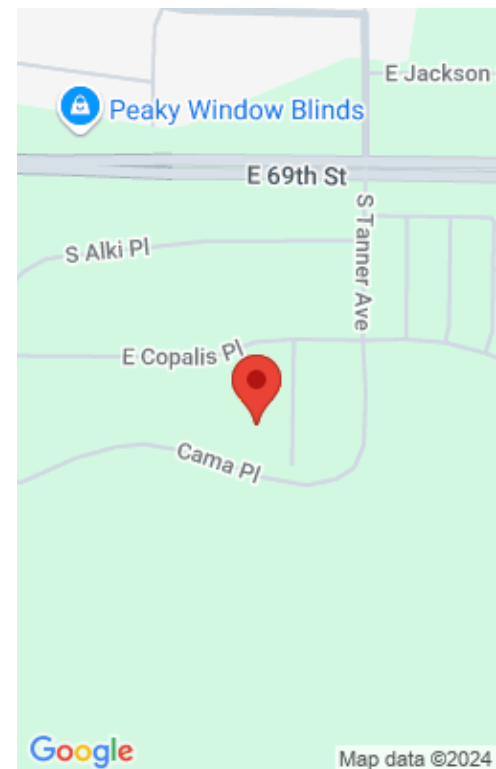
\$275,325.00

2520 E CAMA PL

<https://harr-lemme.com>

LOT 8 BLOCK 3 DONAHOE FARMS ADD CITY OF SIOUX FALLS

- 2 beds
- 2 baths
- Ranch, Town Home
- New Construction, RESIDENTIAL
- Active-New
- 1136 sq ft



Basics

Category: New Construction, RESIDENTIAL

Status: Active-New

Bathrooms: 2 baths

Area: 1136 sq ft

Year built: 2024

Type: Ranch, Town Home

Bedrooms: 2 beds

Floor level: 1136

Lot size: 0 sq ft

Schools

School District: Harrisburg

Middle: North MS

Elementary: Horizon Elementary

High School: Harrisburg HS

Agent

AgentEmail: sales@empirecompanies.com

AgentLastName: Hyde

AgentFirstName: Brady

AgentPhoneNumber: 605-553-0163

Building Details

Floor covering: Carpet, Laminate, Vinyl

Exterior material: Cement Hardboard, Part Brick

Parking: Attached

Basement: None

Roof: Shingle Composition

Amenities & Features

Amenities: Garbage, Lawn Care, Snow Removal

Features: Main Floor Laundry, Master Bath, Master Bed Main Level



Realty Office

Office Name: Keller Williams Realty Sioux Falls

Office State: SD

Office Email: klrw923@kw.com

Office City: Sioux Falls

Office Phone: 605-275-0555

Office Website: siouxfalls.yourkwoffice.com/

