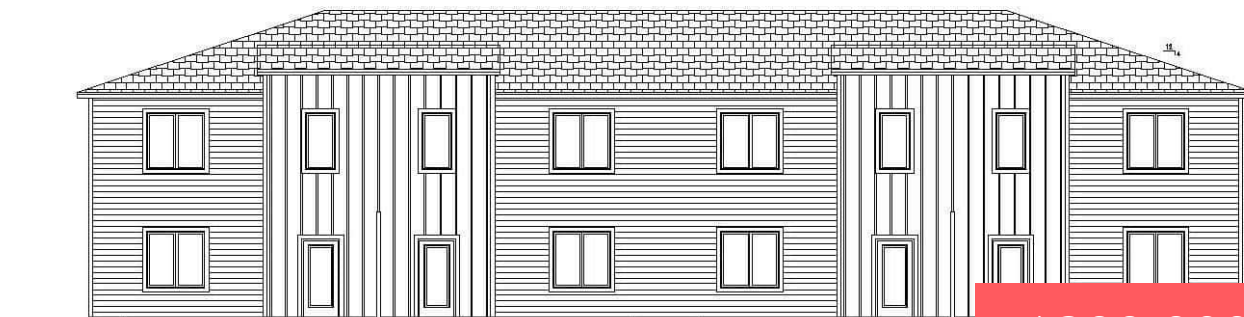




FRONT ELEVATION
1/8"=1'-0"



REAR ELEVATION
1/8"=1'-0"

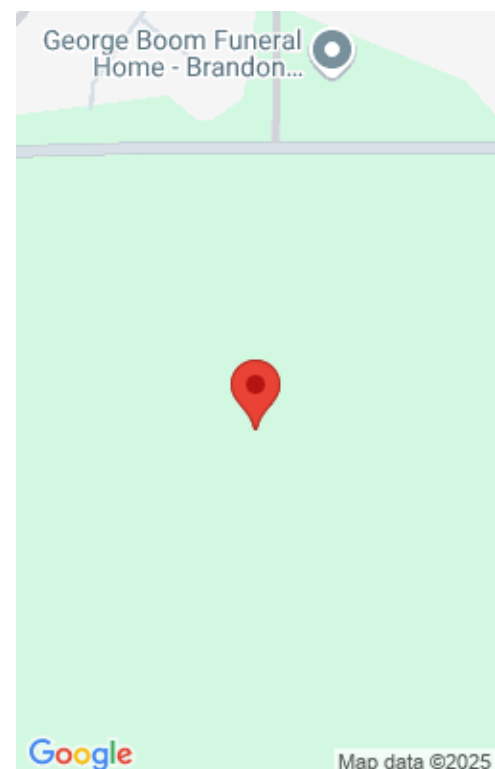
\$299,900

2425 E CAOLINN PL E

<https://harr-lemme.com>

TBD - Aspen Ridge Addition to the City of Brandon

- 3 beds
- 3 baths
- Town Home, Two Story
- New Construction, RESIDENTIAL
- Active-New
- 1781 sq ft





Basics

Category: New Construction, RESIDENTIAL	Type: Town Home, Two Story
Status: Active-New	Bedrooms: 3 beds
Bathrooms: 3 baths	Total rooms: 6
Floor level: 740	Area: 1781 sq ft
Lot size: 7000 sq ft	Year built: 2025



Schools

School District: Brandon Valley 49-2	Elementary: Brandon ES
Middle: Brandon Valley MS	High School: Brandon Valley HS



Agent

AgentEmail: harms@hegg.com	AgentFirstName: Eric
AgentLastName: Harms	AgentPhoneNumber: 605-940-8535



Building Details

Basement: None	Exterior material: Hard Board, Part Brick
Roof: Shingle Composition	Parking: Tuck Under



Amenities & Features

Features: 3+ Bedrooms Same Level, Master Bath



Realty Office



Office Name: Hegg, REALTORS

Office State: SD

Office Email: tina@hegg.com

Office City: Sioux Falls

Office Phone: 605-336-2100

Office Website: www.hegg.com

