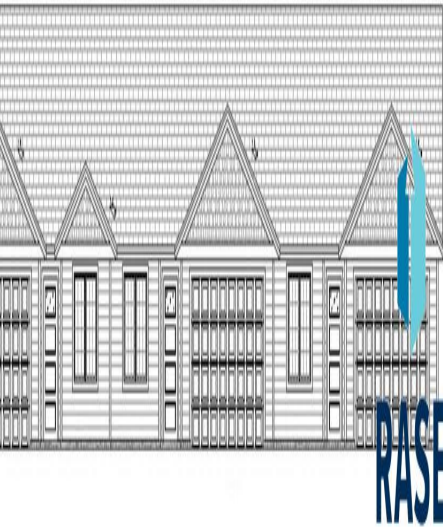
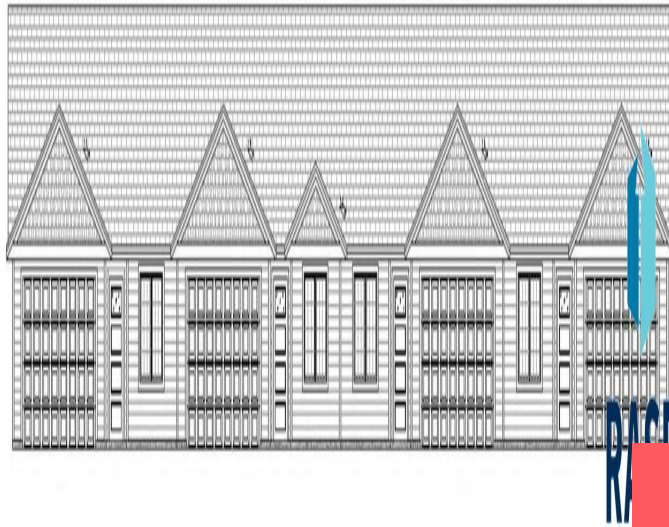


Similar To



Similar To



Similar To

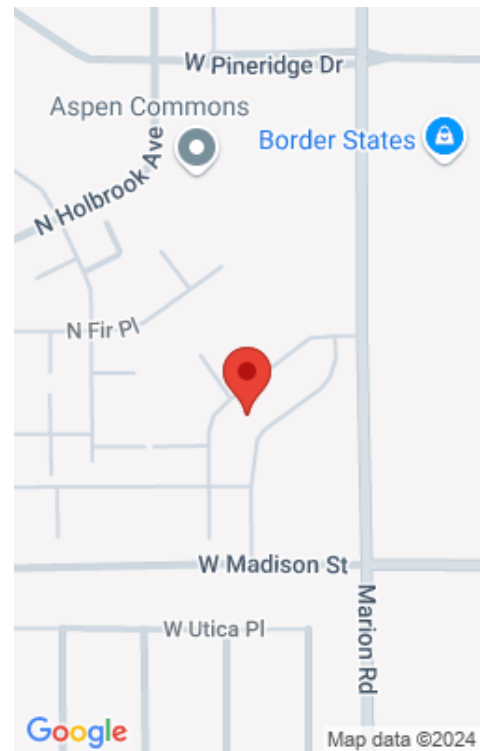
\$292,000.00

## 1233 N MARION RD

<https://harr-lemme.com>

Unit #53, Lot 2, Block 29 of Aspen Heights Addition to Sioux Falls, Minnehaha County, SD

- 2 beds
- 2 baths
- Condominium, Ranch
- New Construction, RESIDENTIAL
- Active, Active - Contingent Home
- 1130 sq ft



---

## Basics

**Category:** New Construction, RESIDENTIAL

**Status:** Active, Active - Contingent Home

**Bathrooms:** 2 baths

**Floor level:** 1130

**Lot size:** 0 sq ft

**Type:** Condominium, Ranch

**Bedrooms:** 2 beds

**Total rooms:** 5

**Area:** 1130 sq ft

**Year built:** 2022

---

## Schools

**School District:** Sioux Falls

**Middle:** George McGovern MS - Sioux Falls

**Elementary:** Hawthorne ES

**High School:** Thomas Jefferson High School

---

## Agent

**AgentEmail:** rhonda@signaturecompaniesllc.com

**AgentMI:** L

**AgentPhoneNumber:** 605-310-9490

**AgentFirstName:** Rhonda

**AgentLastName:** Rentz

---

## Building Details

**Floor covering:** Carpet, Laminate

**Exterior material:** Cement Hardboard

**Parking:** Attached

**Basement:** None

**Roof:** Shingle Composition

---

## Amenities & Features



**Amenities:** Exterior Bldng Maint, Garbage, Lawn Care, Other, Road Maint, Snow Removal, Water/Sewer

**Features:** Main Floor Laundry, Master Bath, Master Bed Main Level, Tray Ceiling, Vaulted Ceiling

---

## Realty Office

**Office Name:** Signature Real Estate & Development Services L.L.C.

**Office State:** SD

**Office Email:** [info@signaturecompaniesllc.com](mailto:info@signaturecompaniesllc.com)

**Office City:** Sioux Falls

**Office Phone:** 605-275-5888

**Office Website:**  
[www.signaturecompaniesllc.com](http://www.signaturecompaniesllc.com)

