

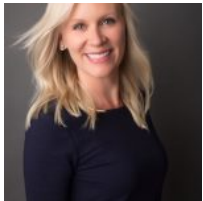


**\$675,000**

## **SIOUX FALLS, SD, 57110**

<https://harr-lemme.com>

Block 14 Lot 19 Arbor's Edge Addition to City of Sioux Falls



**Joy Kortan**

- 5 beds
- 3 baths
- Ranch, Single Family
- None, RESIDENTIAL
- Active
- 3024 sq ft



---

## Basics

**Category:** None, RESIDENTIAL

**Status:** Active

**Bathrooms:** 3 baths

**Area:** 3024 sq ft

**Year built:** 2020

**Type:** Ranch, Single Family

**Bedrooms:** 5 beds

**Floor level:** 1677

**Lot size:** 10672 sq ft

---

## Schools

**School District:** Brandon Valley 49-2

**Middle:** Brandon Valley MS

**Elementary:** Fred Assam ES

**High School:** Brandon Valley HS

---

## Agent

**AgentEmail:** joy@hegg.com

**AgentMI:** S

**AgentPhoneNumber:** 605-212-7982

**AgentFirstName:** Joy

**AgentLastName:** Kortan

---

## Building Details

**Floor covering:** Ceramic, Luxury Vinyl Plank, Tile, Wood

**Exterior material:** Hard Board, Stone/Stone Veneer

**Parking:** Attached

**Basement:** Full

**Roof:** Shingle Composition

---

## Amenities & Features

**Features:** 3+ Bedrooms Same Level, Main Floor Laundry, Master Bath, Master Bed Main Level, Vaulted Ceiling



---

# Realty Office

**Office Name:** Hegg, REALTORS

**Office State:** SD

**Office Email:** [tina@hegg.com](mailto:tina@hegg.com)

**Office City:** Sioux Falls

**Office Phone:** 605-336-2100

**Office Website:** [www.hegg.com](http://www.hegg.com)

