

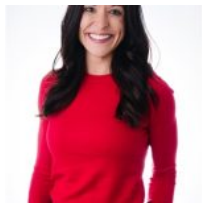


\$975,000

7317 S ELMSTEAD CIR

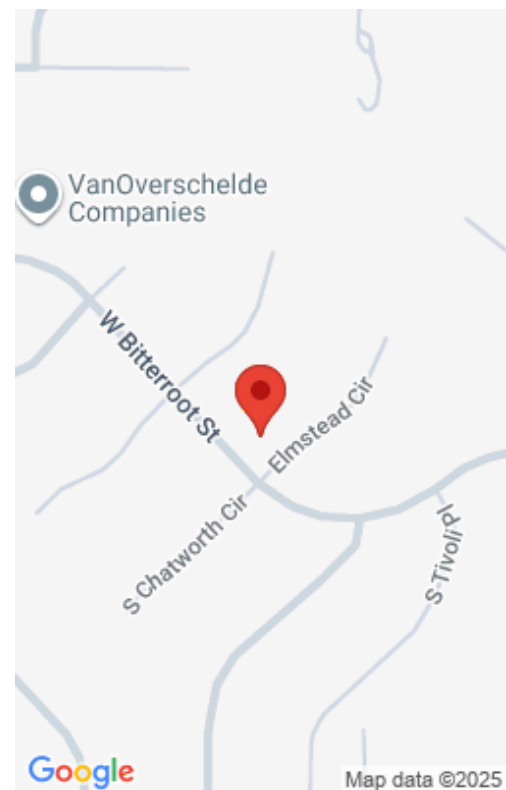
<https://harr-lemme.com>

Lot 24 Block 14 Prairie Hills South Addition to City of Sioux Falls



Kate Patrick

- 5 beds
- 4 baths
- Ranch, Single Family
- None, RESIDENTIAL
- Active
- 4052 sq ft



Basics

Category: None, RESIDENTIAL
Status: Active
Bathrooms: 4 baths
Floor level: 2042
Lot size: 17642 sq ft

Type: Ranch, Single Family
Bedrooms: 5 beds
Total rooms: 13
Area: 4052 sq ft
Year built: 2016

Schools

School District: Harrisburg
Elementary: Harrisburg Endeavor ES
Middle: North Middle School - Harrisburg School District 41-2
High School: Harrisburg HS

Agent

AgentEmail: Kate@605Advantage.com
AgentMI: K
AgentPhoneNumber: 605-261-2562

AgentFirstName: Kate
AgentLastName: Patrick

Building Details

Floor covering: Carpet, Tile
Exterior material: Hard Board, Stone/Stone Veneer
Parking: Attached

Basement: Full
Roof: Shingle Composition

Amenities & Features



Features: Main Floor Laundry, Master Bath, Master Bed Main Level, Pantry, Soaker Tub, Vaulted Ceiling, Wet Bar

Realty Office

Office Name: 605 Real Estate LLC

Office State: SD

Office Email: tonya@605advantage.com

Office City: Sioux Falls

Office Phone: 605-759-4294

