

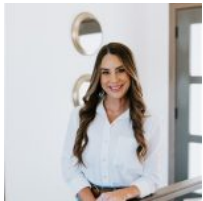


\$324,900

3009 S RICHIE DR

<https://harr-lemme.com>

Westwood Valley 2nd Addition to the city of Sioux Falls



Brittani Frederick

- 3 beds
- 3 baths
- Single Family, Two Story
- None, RESIDENTIAL
- Active
- 1322 sq ft



Basics

Category: None, RESIDENTIAL
Status: Active
Bathrooms: 3 baths
Floor level: 642
Lot size: 6024 sq ft

Type: Single Family, Two Story
Bedrooms: 3 beds
Total rooms: 6
Area: 1322 sq ft
Year built: 2018

Schools

School District: Tea Area
Middle: Tea MS
Elementary: Tea Area Venture Elementary
High School: Tea HS

Agent

AgentEmail: brittani@thinkalpine.com
AgentMI: L
AgentPhoneNumber: 605-201-4277

AgentFirstName: Brittani
AgentLastName: Frederick

Building Details

Floor covering: Carpet, Vinyl
Exterior material: Hard Board, Part Brick
Parking: Attached

Basement: None
Roof: Shingle Composition

Amenities & Features

Features: 3+ Bedrooms Same Level, Master Bath, Vaulted Ceiling



Realty Office

Office Name: Alpine Residential

Office State: SD

Office Email: residential@thinkalpine.com

Office City: Sioux Falls

Office Phone: 605-607-7355

Office Website: thinkalpine.com

