

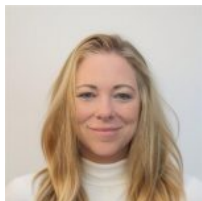


**\$312,500**

## 8905 W 18TH ST

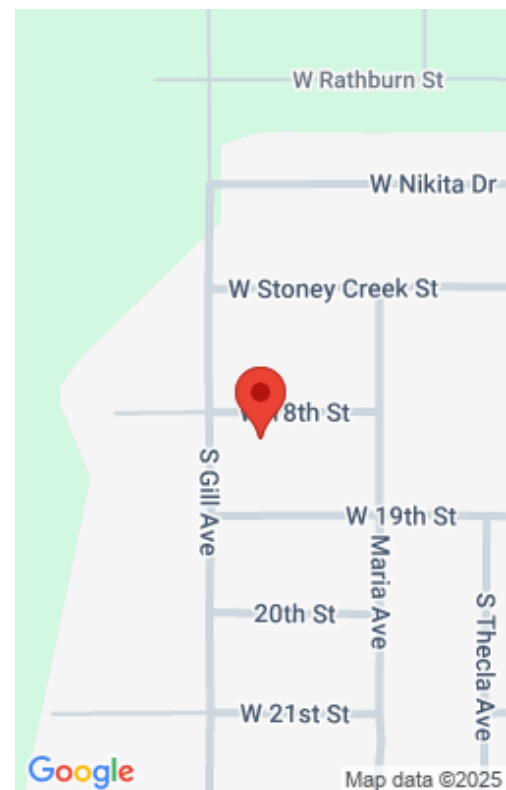
<https://harr-lemme.com>

Lot 2 Block 7 Legacy Ridge Add'n



**Suzanne Erickson**

- 3 beds
- 2 baths
- Single Family, Split Foyer
- None, RESIDENTIAL
- Active
- 1523 sq ft



---

## Basics

**Category:** None, RESIDENTIAL

**Status:** Active

**Bathrooms:** 2 baths

**Floor level:** 870

**Lot size:** 7906 sq ft

**Type:** Single Family, Split Foyer

**Bedrooms:** 3 beds

**Total rooms:** 7

**Area:** 1523 sq ft

**Year built:** 2010

---

## Schools

**School District:** Sioux Falls

**Middle:** George McGovern MS - Sioux Falls

**Elementary:** Hayward ES

**High School:** Thomas Jefferson High School

---

## Agent

**AgentEmail:** suzanne@allenedge.com

**AgentMI:** M

**AgentPhoneNumber:** 605-521-8133

**AgentFirstName:** Suzanne

**AgentLastName:** Erickson

---

## Building Details

**Floor covering:** Carpet, Vinyl

**Exterior material:** Hard Board

**Parking:** Attached

**Basement:** Full

**Roof:** Shingle Composition

---

## Amenities & Features

**Features:** Master Bed Main Level, Vaulted Ceiling



---

# Realty Office

**Office Name:** eXp Realty - SF Allen Team

**Office State:** SD

**Office Email:** [info@allenedge.com](mailto:info@allenedge.com)

**Office City:** Sioux Falls

**Office Phone:** 605-929-5010

**Office Website:** [www.allenedge.com](http://www.allenedge.com)

