

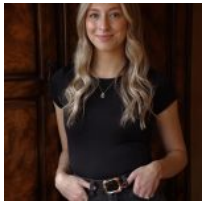


\$330,000

BERESFORD, SD, 57004

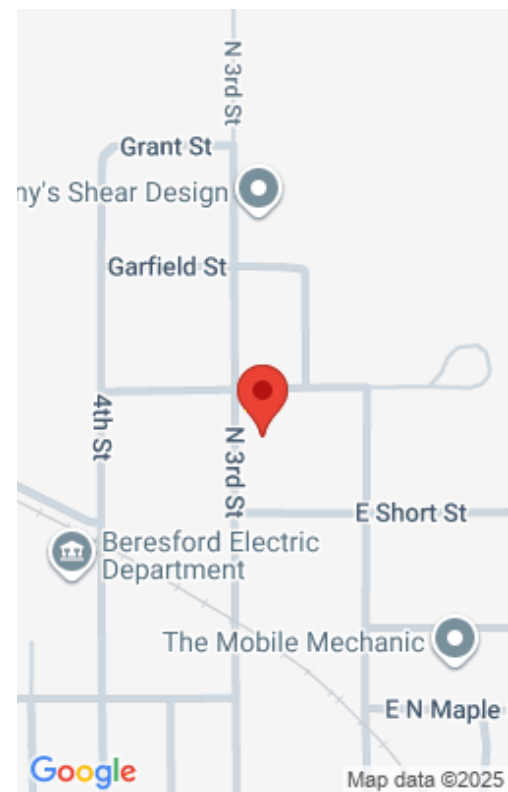
<https://harr-lemme.com>

BERES-ARMOURS ADD LOT 2 - BLK 6



Laken Atwood

- 3 beds
- 2 baths
- Single Family, Two Story
- None, RESIDENTIAL
- Active
- 2554 sq ft



Basics

Category: None, RESIDENTIAL

Status: Active

Bathrooms: 2 baths

Floor level: 985

Lot size: 11100 sq ft

Type: Single Family, Two Story

Bedrooms: 3 beds

Total rooms: 12

Area: 2554 sq ft

Year built: 1930

Schools

School District: Beresford 61-2

Middle: Beresford MS

Elementary: Beresford ES

High School: Beresford HS

Agent

AgentEmail: lakenatwood@kw.com

AgentMI: A

AgentPhoneNumber: 712-454-0601

AgentFirstName: Laken

AgentLastName: Atwood

Building Details

Floor covering: Carpet, Vinyl

Exterior material: Wood

Parking: Detached

Basement: Full

Roof: Shingle Composition

Amenities & Features

Features: 3+ Bedrooms Same Level, Formal Dining Rm, Main Floor Laundry



Realty Office

Office Name: Keller Williams Realty Sioux Falls

Office State: SD

Office Email: klrw923@kw.com

Office City: Sioux Falls

Office Phone: 605-275-0555

Office Website: siouxfalls.yourkwoffice.com/

