

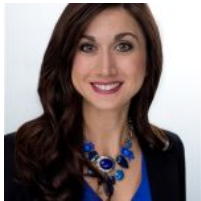


\$309,900

SIOUX FALLS, SD, 57106

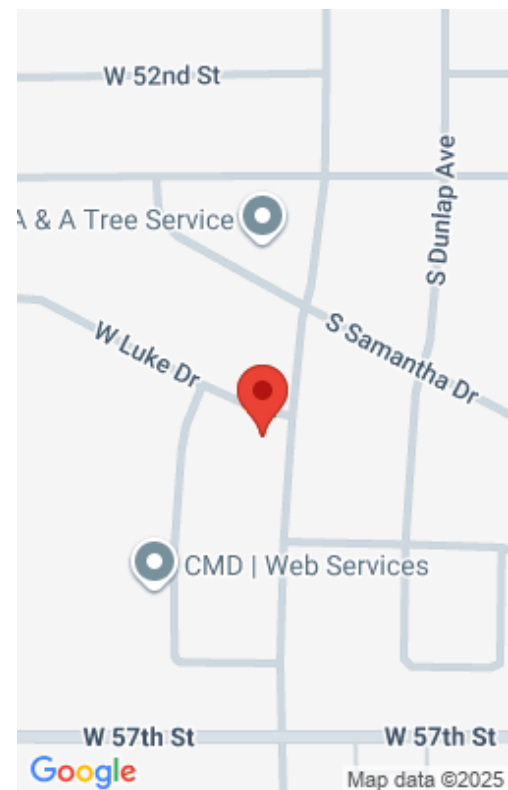
<https://harr-lemme.com>

Lot 1 Block 16 Sertoma Hills Addn to City of Sioux Falls



Teresa Geiken

- 3 beds
- 2 baths
- Ranch, Single Family
- None, RESIDENTIAL
- Active
- 1605 sq ft



Basics

Category: None, RESIDENTIAL
Status: Active
Bathrooms: 2 baths
Floor level: 861
Lot size: 8529 sq ft

Type: Ranch, Single Family
Bedrooms: 3 beds
Total rooms: 9
Area: 1605 sq ft
Year built: 2003

Schools

School District: Sioux Falls
Middle: Memorial MS

Elementary: Pettigrew ES
High School: Roosevelt HS

Agent

AgentEmail: teresag@amystockberger.com
AgentMI: J
AgentPhoneNumber: 605-521-5853

AgentFirstName: Teresa
AgentLastName: Geiken

Building Details

Floor covering: Carpet, Vinyl
Exterior material: Hard Board, Part Brick
Parking: Attached

Basement: Full
Roof: Shingle Composition

Amenities & Features

Features: Master Bed Main Level, Vaulted Ceiling



Realty Office

Office Name: Amy Stockberger Real Estate

Office State: SD

Office Email: adam@asteaminc.com

Office City: Sioux Falls

Office Phone: 605-376-6780

Office Website: amystockberger.com

