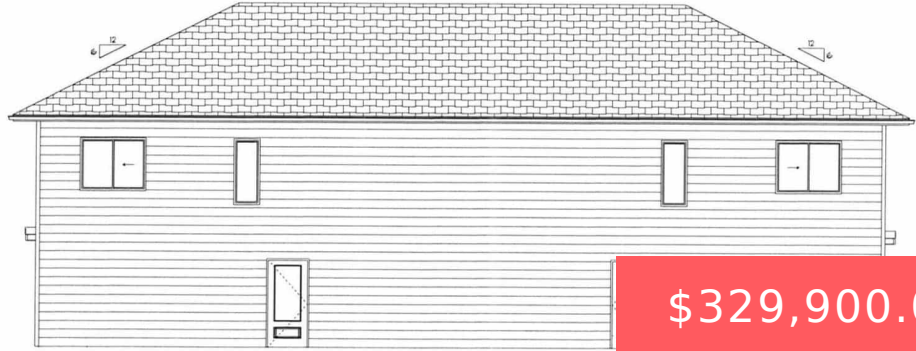




FRONT

SCALE: 1/8" = 1'-0"



\$329,900.00

3902 S CABALLO CT

<https://harr-lemme.com>

Lot 3 Block 2 Equestrian Estates Addition to City of Sioux Falls

- 4 beds
- 3 baths
- Twin Home, Two Story
- New Construction, RESIDENTIAL
- Active, Active-New
- 1630 sq ft



Basics

Category: New Construction, RESIDENTIAL

Status: Active, Active-New

Bathrooms: 3 baths

Floor level: 448

Lot size: 8421 sq ft

Type: Twin Home, Two Story

Bedrooms: 4 beds

Total rooms: 11

Area: 1630 sq ft

Year built: 2024

Schools

School District: Sioux Falls

Middle: Memorial MS

Elementary: Pettigrew ES

High School: Roosevelt HS

Agent

AgentEmail: Kory@TheExperience.com

AgentMI: N

AgentPhoneNumber: 605-496-3160

AgentFirstName: Kory

AgentLastName: Davis

Building Details

Floor covering: Carpet, Vinyl

Exterior material: Hard Board

Parking: Attached

Basement: Partial

Roof: Shingle Composition

Amenities & Features

Features: 3+ Bedrooms Same Level, Master Bath



Realty Office

Office Name: The Experience Real Estate

Office State: SD

Office Email: Kory@TheExperience.com

Office City: Harrisburg

Office Phone: 605-940-5544

Office Website: www.TheExperience.com

