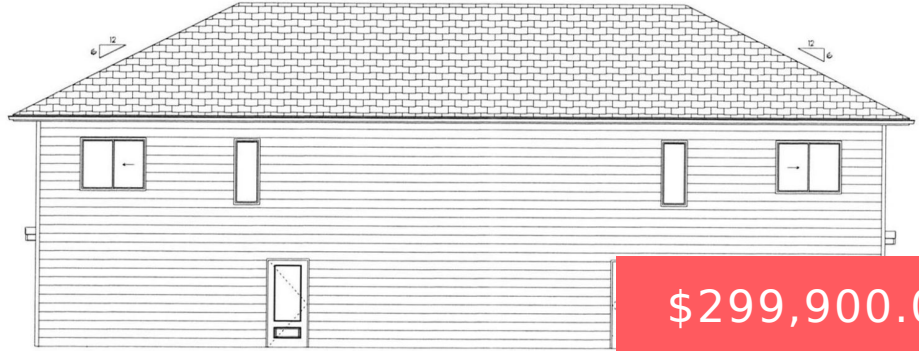




**FRONT**

SCALE: 1/8" = 1'-0"



**\$299,900.00**

**3900 S CABALLO CT**

<https://harr-lemme.com>

Lot 3 Block 2 Equestrian Estates Addition to City of Sioux Falls

- 3 beds
- 2 baths
- Twin Home, Two Story
- New Construction, RESIDENTIAL
- Active, Active-New
- 1420 sq ft



---

## Basics

**Category:** New Construction, RESIDENTIAL

**Status:** Active, Active-New

**Bathrooms:** 2 baths

**Floor level:** 448

**Lot size:** 8421 sq ft

**Type:** Twin Home, Two Story

**Bedrooms:** 3 beds

**Total rooms:** 9

**Area:** 1420 sq ft

**Year built:** 2024

---

## Schools

**School District:** Sioux Falls

**Middle:** Memorial MS

**Elementary:** Pettigrew ES

**High School:** Roosevelt HS

---

## Agent

**AgentEmail:** Kory@TheExperience.com

**AgentMI:** N

**AgentPhoneNumber:** 605-496-3160

**AgentFirstName:** Kory

**AgentLastName:** Davis

---

## Building Details

**Floor covering:** Carpet, Vinyl

**Exterior material:** Hard Board

**Parking:** Attached

**Basement:** Partial

**Roof:** Shingle Composition

---

## Amenities & Features

**Features:** 3+ Bedrooms Same Level, Master Bath



---

# Realty Office

**Office Name:** The Experience Real Estate

**Office State:** SD

**Office Email:** Kory@TheExperience.com

**Office City:** Harrisburg

**Office Phone:** 605-940-5544

**Office Website:** [www.TheExperience.com](http://www.TheExperience.com)

