

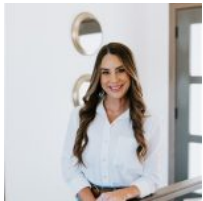


\$223,000

SIoux FALLS, SD, 57108

<https://harr-lemme.com>

SF - WHISPER RIDGE SOUTH ADD - LOT 10D - BLK 3



Brittani Frederick

- 1 bed
- 1 bath
- Ranch, Townhouse
- None, RESIDENTIAL
- Active
- 887 sq ft



Basics

Category: None, RESIDENTIAL
Status: Active
Bathrooms: 1 bath
Floor level: 887
Lot size: 0 sq ft

Type: Ranch, Townhouse
Bedrooms: 1 bed
Total rooms: 3
Area: 887 sq ft
Year built: 2017

Schools

School District: Harrisburg
Middle: Harrisburg East Middle School

Elementary: Horizon Elementary
High School: Harrisburg HS

Agent

AgentEmail: brittani@thinkalpine.com
AgentMI: L
AgentPhoneNumber: 605-201-4277

AgentFirstName: Brittani
AgentLastName: Frederick

Building Details

Floor covering: Carpet, Laminate
Exterior material: Cement Hardboard, Stone/Stone Veneer
Parking: Attached

Basement: None
Roof: Shingle Composition

Amenities & Features

Amenities: Comm Center, Garbage, Lawn Care, Snow Removal
Features: Main Floor Laundry, Master Bath, Master Bed Main Level, Vaulted Ceiling



Realty Office

Office Name: Alpine Residential

Office State: SD

Office Email: residential@thinkalpine.com

Office City: Sioux Falls

Office Phone: 605-607-7355

Office Website: thinkalpine.com

