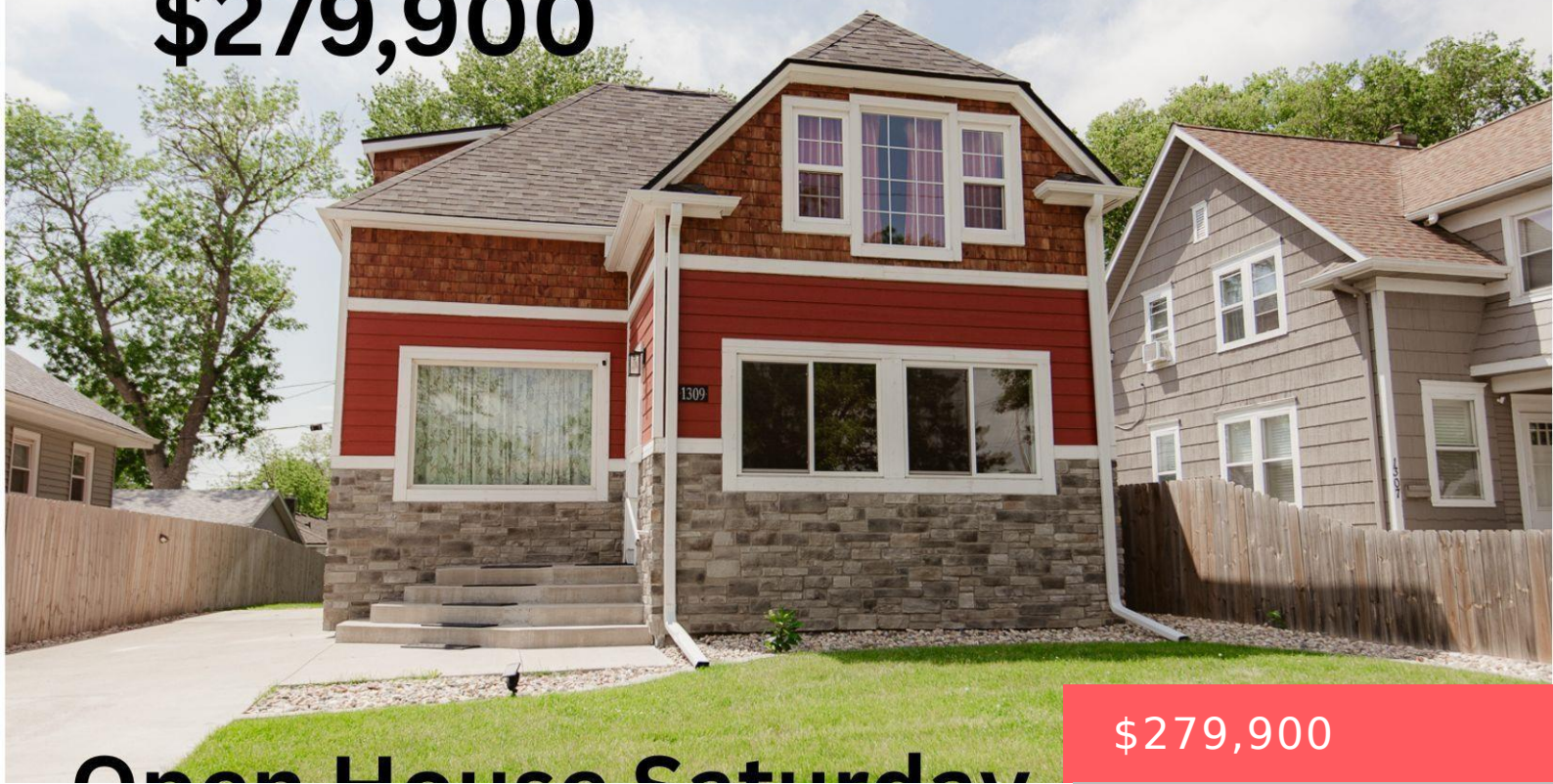


\$279,900



Open House Saturday

\$279,900

SIoux FALLS, SD, 57105

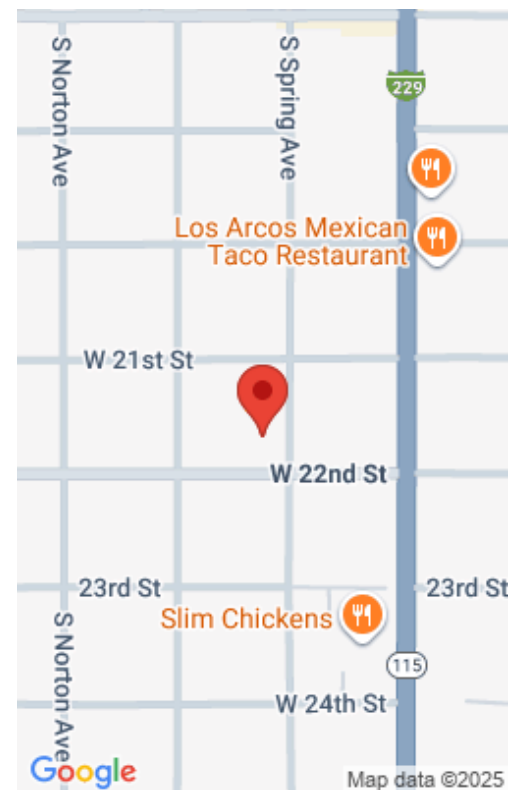
<https://harr-lemme.com>

S 44' N 88 SE 14 Block 31 Park Addn To City of Sioux Falls



Charity Mcknight

- 3 beds
- 3 baths
- 1.5 Story, Single Family
- None, RESIDENTIAL
- Active
- 1229 sq ft



Basics

Category: None, RESIDENTIAL

Status: Active

Bathrooms: 3 baths

Floor level: 610

Lot size: 5764 sq ft

Type: 1.5 Story, Single Family

Bedrooms: 3 beds

Total rooms: 7

Area: 1229 sq ft

Year built: 1913

Schools

School District: Sioux Falls

Middle: Edison MS

Elementary: Lowell ES

High School: Roosevelt HS

Agent

AgentEmail: charity@thinkalpine.com

AgentMI: J

AgentPhoneNumber: 605-366-4285

AgentFirstName: Charity

AgentLastName: Mcknight

Building Details

Floor covering: Carpet, Concrete, Laminate, Tile

Exterior material: Hard Board, Stone/Stone Veneer

Basement: Full

Roof: Shingle Composition

Realty Office

Office Name: Alpine Residential

Office State: SD

Office Email: residential@thinkalpine.com

Office City: Sioux Falls

Office Phone: 605-607-7355

Office Website: thinkalpine.com

