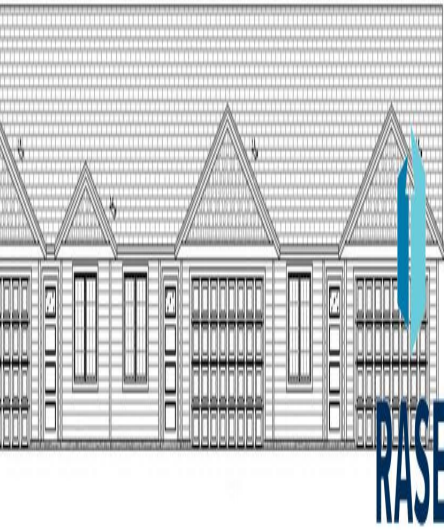
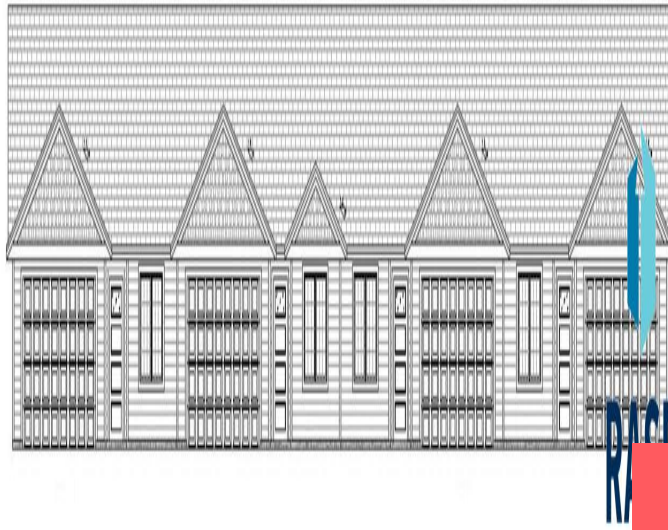


Similar To



Similar To



Similar To

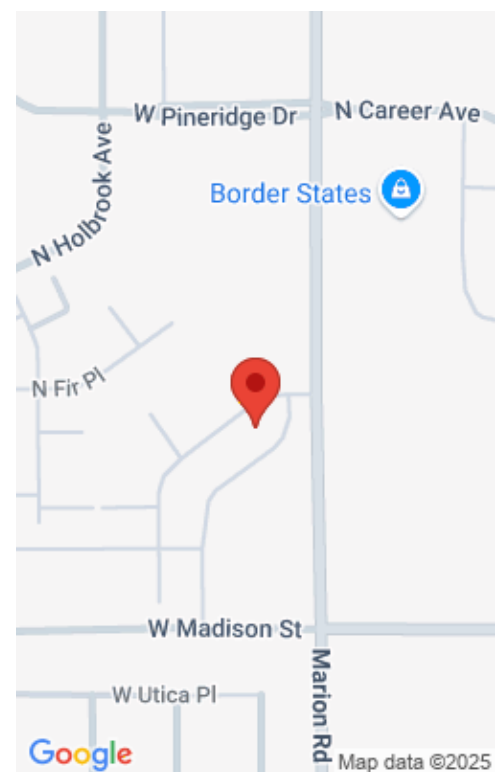
\$273,006

1257 N MARION RD

<https://harr-lemme.com>

Unit #58, Lot 2, Block 29 of Aspen Heights Addition to Sioux Falls,
Minnehaha County, SD

- 2 beds
- 2 baths
- Condominium, Ranch
- New Construction, RESIDENTIAL
- Active, Active-New
- 1130 sq ft



Basics

Category: New Construction, RESIDENTIAL
Status: Active, Active-New
Bathrooms: 2 baths
Floor level: 1130
Lot size: 0 sq ft

Type: Condominium, Ranch
Bedrooms: 2 beds
Total rooms: 5
Area: 1130 sq ft
Year built: 2022

Schools

School District: Sioux Falls
Middle: George McGovern MS - Sioux Falls

Elementary: Hawthorne ES
High School: Thomas Jefferson High School

Agent

AgentEmail: rhonda@signaturecompaniesllc.com
AgentMI: L
AgentPhoneNumber: 605-310-9490

AgentFirstName: Rhonda
AgentLastName: Rentz

Building Details

Floor covering: Carpet, Laminate
Exterior material: Cement Hardboard
Parking: Attached

Basement: None
Roof: Shingle Composition

Amenities & Features



Amenities: Exterior Bldng Maint, Garbage, Lawn Care, Other, Road Maint, Snow Removal, Water/Sewer

Features: Main Floor Laundry, Master Bath, Master Bed Main Level, Tray Ceiling, Vaulted Ceiling

Realty Office

Office Name: Signature Real Estate & Development Services L.L.C.

Office State: SD

Office Email: info@signaturecompaniesllc.com

Office City: Sioux Falls

Office Phone: 605-275-5888

Office Website:
www.signaturecompaniesllc.com

