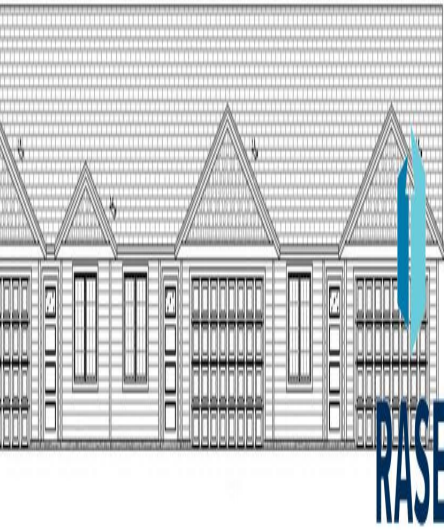
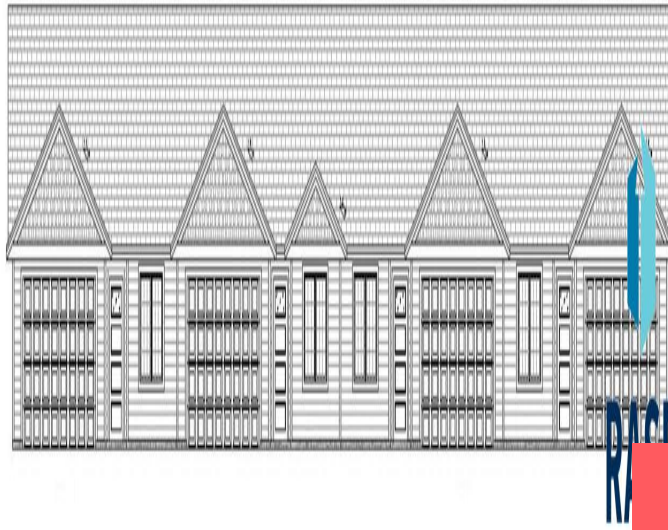


Similar To



Similar To



Similar To

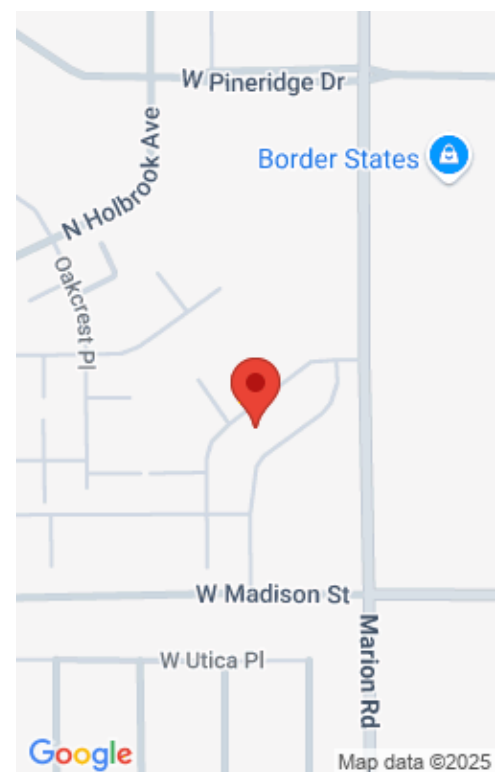
\$267,900

## 1233 N MARION RD

<https://harr-lemme.com>

Unit #55, Lot 2, Block 29 of Aspen Heights Addition to Sioux Falls,  
Minnehaha County, SD

- 2 beds
- 2 baths
- Condominium, Ranch
- New Construction, RESIDENTIAL
- Active, Active-New
- 1130 sq ft



---

# Basics

<b>Category:</b> New Construction, RESIDENTIAL	<b>Type:</b> Condominium, Ranch
<b>Status:</b> Active, Active-New	<b>Bedrooms:</b> 2 beds
<b>Bathrooms:</b> 2 baths	<b>Total rooms:</b> 5
<b>Floor level:</b> 1130	<b>Area:</b> 1130 sq ft
<b>Lot size:</b> 0 sq ft	<b>Year built:</b> 2022

---

# Schools

<b>School District:</b> Sioux Falls	<b>Elementary:</b> Hawthorne ES
<b>Middle:</b> George McGovern MS - Sioux Falls	<b>High School:</b> Thomas Jefferson High School

---

# Agent

<b>AgentEmail:</b> rhonda@signaturecompaniesllc.com	<b>AgentFirstName:</b> Rhonda
<b>AgentMI:</b> L	<b>AgentLastName:</b> Rentz
<b>AgentPhoneNumber:</b> 605-310-9490	

---

# Building Details

<b>Floor covering:</b> Carpet, Laminate	<b>Basement:</b> None
<b>Exterior material:</b> Cement Hardboard	<b>Roof:</b> Shingle Composition
<b>Parking:</b> Attached	

---

# Amenities & Features



**Amenities:** Exterior Bldng Maint, Garbage, Lawn Care, Other, Road Maint, Snow Removal, Water/Sewer

**Features:** Main Floor Laundry, Master Bath, Master Bed Main Level, Tray Ceiling, Vaulted Ceiling

---

## Realty Office

**Office Name:** Signature Real Estate & Development Services L.L.C.

**Office State:** SD

**Office Email:** [info@signaturecompaniesllc.com](mailto:info@signaturecompaniesllc.com)

**Office City:** Sioux Falls

**Office Phone:** 605-275-5888

**Office Website:**  
[www.signaturecompaniesllc.com](http://www.signaturecompaniesllc.com)

